

# BUTTERFLY VALVES - 150PSI

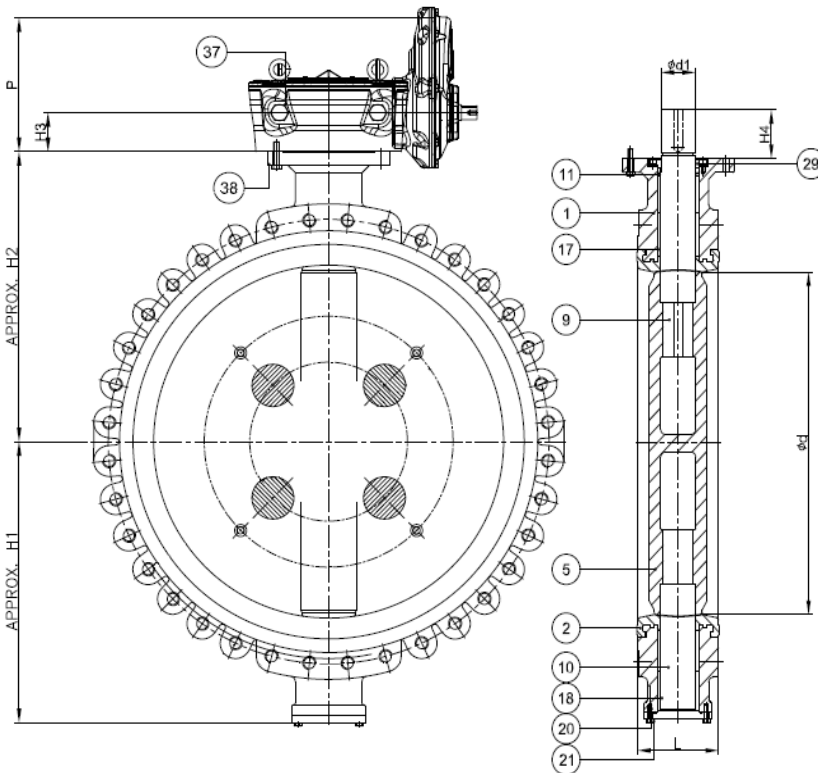
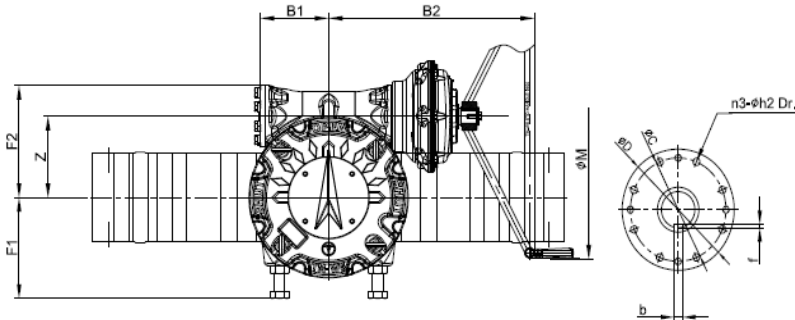
Lug Design • Ductile Iron Body  
Bi-Directional • ISO Mounting Pad • Gear Operator  
SIZE 30" 36" 42"

DESIGN STANDARDS: API609 Cat.A , MSS SP-67 END CONNECTION: ASME B16.47 Series A CL.150-FF

## CODE #6131EGC

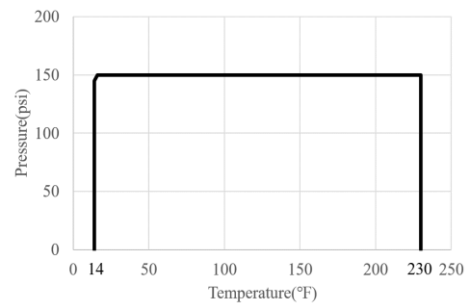
### DESIGN FEATURES

- Seat** Liner is an elastomeric seat inserted into the body. Good intergral support, stable and solid, stretch resistant, leakage proof.  
Seat to flange seal eliminates the need for gaskets.
- Disc** Precision profile provides bubble-tight shut-off, assures minimum torque and longer seat life.
- Mounting Flange** ISO 5211 mounting flange accommodates direct mounting of all types of actuators.
- Blow-out Proof St** The upper stem is fully retained by the retainer plate under pressure in unlikely event of primary seal fail.
- Deadend Service:** Suitable for Bi-directional Deadend Service at full differential pressure



MATERIAL LIST		
NO.	NAME OF PART	SPECIFICATION
1	BODY	DUCTILE IRON (A536 Gr.65-45-12)
2	BODY SEAT	EPDM
5	DISC	STAINLESS STEEL (A351 CF8M)
9	STEM(MAIN)	STAINLESS STEEL (A479 Type 410)
10	STEM(STUB)	STAINLESS STEEL (A479 Type 410)
11	O Ring	EPDM
17	BUSH(MAIN)	NICKEL ALUMINUM BRONZE (B148 C95400)
18	BUSH(STUB)	NICKEL ALUMINUM BRONZE (B148 C95400)
20	END COVER	CARBON STEEL (A36)
21	END COVER BOLT	A193 B7
29	TOP RETAINER	STAINLESS STEEL (A240 Type 304)
37	GEAR BOX	
38	GEAR BOX BOLT	A193 B7

### PRESSURE-TEMPERATURE RATING



### DIMENSIONS

SIZE	d	L	H1	H2	H3	B1	B2	F1	F2	Z	P	M	C	D	n3	h2	d1	H4	b	f	Lbs. Kgs.	ISO 5211
in. 30	28.78	6.50	22.09	23.03	3.74	7.87	20.08	8.86	10.04	7.28	12.99	27.95	10.00	11.81	0.31	0.71	2.83	5.12	0.79	0.30	1588	F25
mm 750	731	165	561	585	95	200	510	225	255	185	330	710	254	300	8	18	72	130	20	7.5	721	
in. 36	33.86	7.88	26.18	27.20	3.74	7.87	20.08	8.86	10.04	7.28	12.99	27.95	11.73	13.78	0.31	0.87	3.15	5.51	0.98	0.35	2309	F30
mm 900	860	200	665	691	95	200	510	225	255	185	330	710	298	350	8	22	80	140	25	9	1048	
in. 42	39.76	9.88	31.30	32.32	4.33	8.46	24.02	10.63	12.60	9.06	17.32	31.50	14.02	16.34	0.31	1.30	3.94	5.51	1.10	0.39	3165	F35
mm 1050	1010	251	795	821	110	215	610	270	320	230	440	800	356	415	8	33	100	140	28	10	1436	