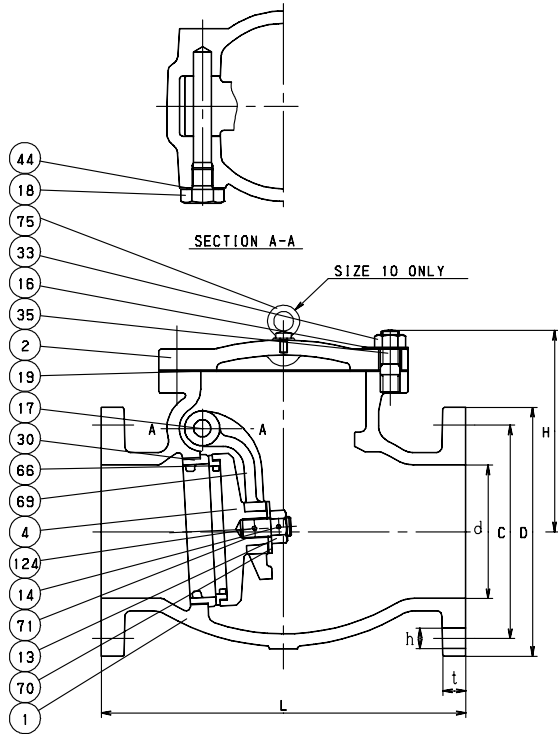


SWING CHECK CLASS 125 CAST IRON

Bolted Cover • Bronze Mounted
Swing Type Disc

CODE # 78 (125FCO)



STANDARDS

END TO END	ANSI B16.10, CLASS 125
END CONNECTION	ANSI B16.1, CLASS 125
DESIGN	MSS SP-71, TYPE I
MILITARY	MSS SP-71, TYPE I

PRESSURE/TEMPERATURE

125 PSI - SATURATED STEAM TO 353°F - FLUID TO 406°F
200 PSI NON-SHOCK COLD WATER, OIL OR GAS

MATERIAL LIST

NO.	NAME OF PART	SPECIFICATION
1	BODY	CAST IRON (A126 CLASS B)
2	COVER	CAST IRON (A126 CLASS B)
4	DISC (2 - 4) (5 - 10)	CAST BRONZE (B62) CAST IRON (A126 CLASS B)
13	DISC NUT	CARBON STEEL (A307 Gr. B)
14	SPLIT PIN	STAINLESS STEEL (A580 Type 304)
16	NAME PLATE	ALUMINUM
17	HINGE PIN	FORGED BRASS (B124, C37700)
18	PLUG	CARBON STEEL (A36)
19	GASKET	NON ASBESTOS SHEET
30	BODY SEAT RING	CAST BRONZE (B62)
33	COVER NUT	CARBON STEEL (A307 Gr. B)
35	COVER BOLT	CARBON STEEL (A307 Gr. B)
44	GASKET	NON ASBESTOS SHEET
66	DISC SEAT RING	CAST BRONZE (B62)
69	ARM	DUCTILE IRON (A536 Gr.60-40-18)
70	WASHER	CARBON STEEL (A36)
71	DISC BOLT	CARBON STEEL (A307 Gr. B)
124	SPRING PIN	CARBON STEEL (A686 Type W1)

DIMENSIONS - WEIGHTS - QUANTITIES

d2 SIZE	d	H	L	D	BOLT HOLE			t	APPROX. NET WT.	
					C	No.	h			
2	1.97	4.37	8.00	6.00	4.75	4	.75	5/8	.62	24
2½	2.56	4.76	8.50	7.00	5.50	4	.75	5/8	.69	38
3	3.15	5.71	9.50	7.50	6.00	4	.75	5/8	.75	47
4	3.94	6.50	11.50	9.00	7.50	8	.75	5/8	.94	66
5	4.92	8.15	13.00	10.00	8.50	8	.88	3/4	.94	111
6	5.91	8.86	14.00	11.00	9.50	8	.88	3/4	1.00	153
8	7.87	10.55	19.50	13.50	11.75	8	.88	3/4	1.12	251
10	9.84	12.40	24.50	16.00	14.25	12	1.00	7/8	1.19	396

CAST IRON SWING CHECK