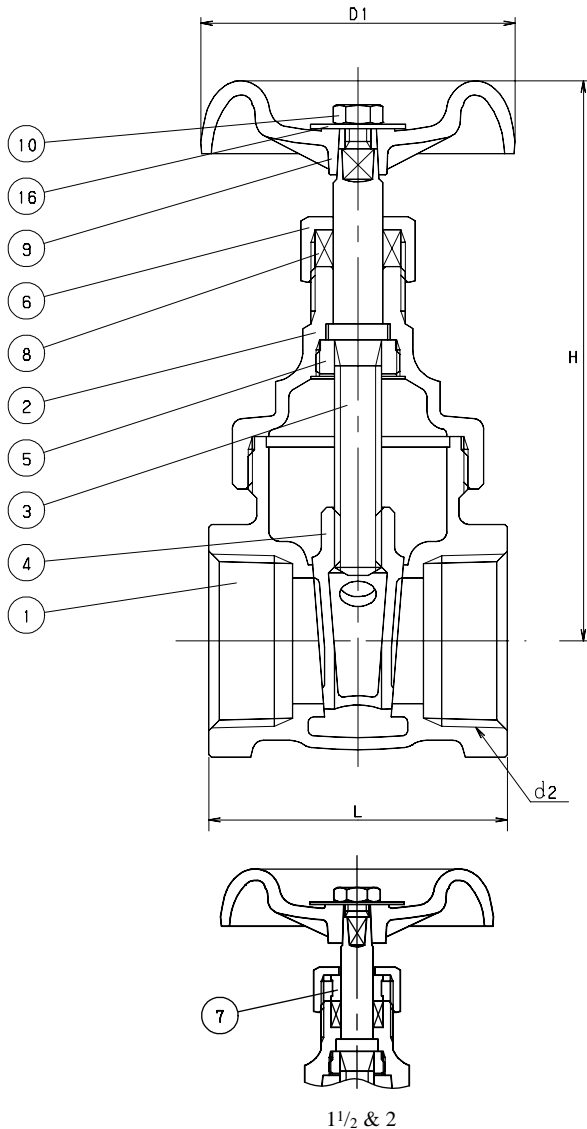


GATE

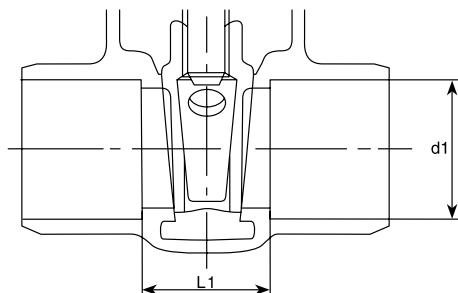
CLASS 125 BRONZE

Screw-Over-Bonnet • Non-Rising Stem
Solid Wedge Disc

CODE # 27 (AKH) THREADED



CODE # 28 (CH) SOLDER*



STANDARDS

END TO END	KITZ
THREADED ENDS	ANSI B1.20.1
SOLDER JOINT ENDS	ANSI B16.18
WALL THICKNESS	KITZ
DESIGN	KITZ

PRESSURE/TEMPERATURE

125 PSI - SATURATED STEAM TO 353°F
- FLUID TO 406°F
200 PSI NON-SHOCK COLD WATER, OIL OR GAS

*SEE PRESSURE/TEMPERATURE LIMITATIONS FOR SOLDER JOINT VALVES - PAGE BIV-50.

MATERIAL LIST

NO.	NAME OF PART	SPECIFICATION
1	BODY	CAST BRONZE (ASTM B62)
2	BONNET	CAST BRONZE (ASTM B62)
3	STEM	BRASS (KITZ "K" METAL)
4	DISC $(\frac{3}{8} - \frac{1}{2})$ $(\frac{3}{4} - 2)$	KITZ "K" METAL CAST BRONZE (ASTM B62)
5	LOCK NUT	BRASS ROD (B16)
6	PACKING NUT	FORGED BRASS (B283, C37700)
7	GLAND	BRASS ROD (B16)
8	GLAND PACKING	ARAMID FIBERS W/ GRAPHITE
9	HAND WHEEL $(\frac{3}{8} - \frac{1}{4})$ $(1\frac{1}{2} - 2)$	ZINC DIE-CAST (B86) ALUMINUM DIE-CAST (B85)
10	WHEEL NUT	CARBON STEEL (A307 Gr. B)
16	NAME PLATE	ALUMINUM

DIMENSIONS - WEIGHTS - QUANTITIES

d2 SIZE	H	D1	L	L1	d1		APPROX. NET WT.	CARTON QTY
					Max.	Min.		
$\frac{3}{8}$	2.91	1.97	1.65	.78	.506	.502	0.58	96
$\frac{1}{2}$	3.15	1.97	1.77	.81	.631	.627	0.71	48
$\frac{3}{4}$	3.54	2.17	1.97	.90	.881	.877	0.90	30
1	4.13	2.36	2.24	1.01	1.132	1.128	1.43	40
$1\frac{1}{4}$	4.65	2.76	2.40	1.13	1.382	1.378	1.93	30
$1\frac{1}{2}$	5.31	3.15	2.64	1.25	1.633	1.628	2.63	24
2	6.26	3.54	2.91	1.34	2.133	2.128	4.19	16